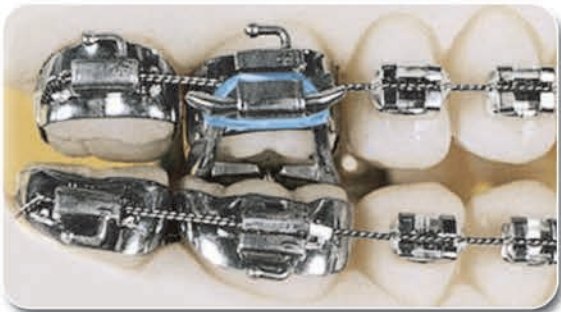




Güray Bite Raiser™

Developed by Dr. Enis Güray
Ask The Expert
 enisg@orthotechnology.com



Create a **Temporary Bite Opening** for **Deep** or **Cross-Bite** Cases that call for **Unobstructed Tooth Movement**

Easy Chairside Application

Simply shape and mold the Güray Bite Raiser for a custom fit, insert and ligate the proximal wings into the headgear tube and ligate the "T" Spur onto the lingual cleat.

Secure, Yet Removable

Güray Bite Raisers, unlike Bite Turbos and Bite Builders, can be easily disconnected at the lingual cleat to check the occlusion. Simply resecure if additional treatment time is needed with no debonding concerns, saving the clinician both time and money.

Features & Benefits

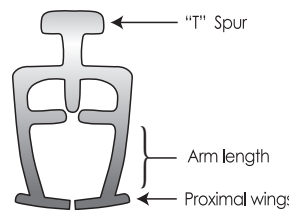
- Inexpensive and practical
- Easy and unobstructed tooth movement
- Ensure optimal oral hygiene
- Comfortable for patient
- Easy insertion and removal - insertion takes a couple of minutes, removal takes even less time



Eliminates

- Patient compliance requirement
- Removable bite plates
- Laboratory work
- Restorative materials

Resulting In

- Less chairtime
- Less treatment time and expense



		Bite Raiser Thickness	
		0.8mm Child	1.0mm Adult
Bite Raiser Length	4,0 mm Arm 	Item # 10030 (for occlusal headgear tubes)	Item # 10032
	6,0 mm Arm 	Item # 10031 (for gingival headgear tubes)	Item # 10033

Güray Bite Raiser (Child)
 0.8 mm x 4.0 mm..... 10030
 0.8 mm x 6.0 mm..... 10031
10 per pack

Güray Bite Raiser (Adult)
 1.0 mm x 4.0 mm..... 10032
 1.0 mm x 6.0 mm..... 10033
10 per pack

© 2017 Ortho Technology, Inc. Güray Bite Raiser is a trademark of Ortho Technology. U.S. Patent Number 6,726,473.

ATTACHMENTS

ATTACHMENTS



Developed by
Dr. Enis Güray

Ask the Expert

enig@orthotechnology.com
orthotechnology.com/EzFAQ

EZ Space Maintainer® Adjustable, Bondable Space Maintainer

No Impressions Necessary! Treatment in One Appointment!

Ortho Technology's EZ Space Maintainer is more cost-effective and less time-consuming than traditional space maintainer appliances. It requires no impressions, no laboratory construction, and can be directly bonded during one in-office visit. The EZ Space Maintainer is more aesthetic and hygienic than traditional space maintainer appliances. Simple and easy to use, the EZ Space Maintainer is available as a secure, adjustable space maintainer providing easy maintenance of the mesio-distal dimension of any lost, deciduous teeth or as an adjustable appliance by using the NiTi coil included to regain some space.

Features and Benefits:

- Simple and easy to use
- Direct bond appliance
- Less chairtime, less expense
- No lab fees
- More hygienic, more aesthetic
- Secure and adjustable space maintainer options
- Color coded identification marks by quadrant on 1st molar

EZ Space Maintainer Starter Kit Item #: 10022

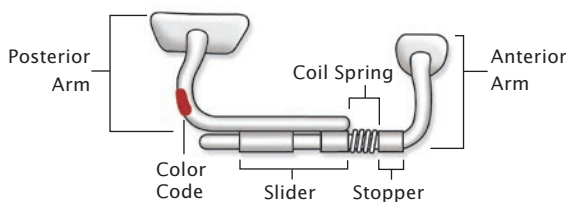
4x space maintainers per pack,
1 for each quadrant

EZ Space Maintainer Replacement Packs Individual Quadrants

- Upper Right..... 10024
- Upper Left..... 10025
- Lower Right..... 10026
- Lower Left..... 10027

3x space maintainers per pack

EZ Space Maintainer Reference Diagram

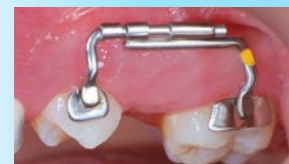


EZ Space Maintainer Typodont Item #: G50-098

1x typodont, 1 space
maintainer per quadrant



Case Studies



PLUS! Regain Space with Optional Included Spring



To regain space, simply activate the optional coil spring (shown above) by squeezing the stopper with any plier.

NEW!

■ ■ ■ ATTACHMENTS

TruEase™ Bite Corrector Devices*

Innovative Orthodontic Intraoral Devices
for the Correction of **Class II** and **Class III** Cases

ATTACHMENTS



Better Results with More Efficiency

Help your non-compliant patients make the transition to an ideal Class I molar relationship quicker and with more comfort than any other bite-corrector device available, using the TruEase Bite Corrector Device.

- **ELIMINATE HEADGEAR TUBES** attaches directly onto the archwire, without removal, and locks into place; no headgear tube or band required when using Double Lock Bite Corrector
- **QUICK & EASY INSTALLATION** only one appointment necessary for "out-of-the-box" installation
- **UNIVERSAL ORIENTATION** appliances are bi-directional, eliminating extra part numbers and placement mix-up
- **PERFECT FOR NON-COMPLIANT PATIENTS** get maximum results with minimal patient cooperation
- **VERSATILE** applicable for both extraction and non-extraction cases, with two styles to choose from: *Double Lock and Anchor Wire*

Bite Corrector Anchor Wire Kit

Standard Size (32.0-48.0 mm)..... TEBC210
 Small Size (27.0-36.0 mm) TEBC211

2x interchangeable springs, 1x double end locking tool, and detailed step-by-step instructions

Bite Corrector Double Lock Kit

Standard Size (27.0-36.0 mm)..... TEBC215
 Small Size (23.0-32.0 mm) TEBC216

*2x interchangeable springs, 1x double end locking tool, 4x bite corrector screws, and detailed step-by-step instructions
 Only available in U.S. and Canada

© 2017 Ortho Technology, Inc. TruEase is a trademark of Ortho Technology, Inc.

Order 24 hours a day, 7 days a week by FAX 1-813-666-1050